

Managing ATV Access on Wisconsin's State Highways

Jeff Emerson

WISDOT NW Region Planning and Access Supervisor

WTTC

Nov. 7, 2018



TOPICS FOR TODAY

- Safety considerations for ATVs and highways
- System considerations, Barriers, Risk assessment
- WisDOT accommodation policy for ATV *routes on roadway, Trails in ROW*

ATV Interaction with Public Roadways

- Urban Legend #1...** *ATV/UTVs have same statutory allowances to ride on public roads or in the right-of-way next to public roads as do snowmobilers. No...Only legal if there is marked ATV trail or route.*
- Urban Legend #2...** *There is an automatic allowance for riding on a roadway between your residence and nearest trail or route. No...Only legal if it is marked as an ATV route.*



Economic Development & Tourism

Historical ATV use

- Rails-to-Trails facilities
- Agriculture use
- Back country access for hunting, etc.

The focus has shifted

- Tourism
 - Rentals, guided outings
 - Travel
- Web Search shows where
The interest is...

Wisconsin Travel Guide | Discover Exciting Vacations

www.travelwisconsin.com/

Find Out About Attractions Dining, Tours & More. Make It Your Best Vacation Yet! Order Guide, Accommodation Information, Search Events, Explore Activities, Dining Options, Travel Deals

Wisconsin ATV Trails & UTV Trails | Travel Wisconsin

<https://www.travelwisconsin.com/things-to-do/outdoor-fun/atv-and-utv>

Wisconsin has hundreds of miles of scenic UTV and ATV trails for your fun 4 wheeling adventures! View our directory here.

Five Must-Experience ... Wisconsin ATV Trails with ... 3 ATV Destinations for a ...

5 Must Experience ATV Trails | UTV | Travel Wisconsin

<https://www.travelwisconsin.com/article/atv.../five-must-experience-wisconsin-atv-trail>

The spectacular views are matched only by the spectacular thrills you'll find on Wisconsin ATV trails. ... A terrific online source is the Wisconsin ATV/UTV Association. ... Chippewa County ATV Trail.

ATV Trails, Rentals, & Riding Parks | Travel Wisconsin

<https://www.travelwisconsin.com/.../atv.../a-beginners-guide-to-atv-riding-in-wisconsin>

Thinking about trying out ATV riding in Wisconsin? Here's a beginners guide with info about ATV rentals, riding parks, Wisconsin ATV trails and more!

3 ATV Vacations for a Guy's Getaway | Travel Wisconsin

<https://www.travelwisconsin.com/.../atv.../3-atv-destinations-for-a-wisconsin-guys-geta>

Check out these 3 great ATV destinations perfect for a guy's getaway--get details on trails, places to stay and restaurants along the way!

North East Wisconsin Riders Inc. Guided ATV UTV Trail Rides

www.newridersatvclub.com/en/tours.aspx

Guided Trail Tours Would you like to go for an ATV / UTV ride? North East Wisconsin Riders Inc. ATV / UTV Club guided trail rides is the most popular event.

Wisconsin UTV Tours | Wisconsin ATV Tours | Peshtigo River ...

Community Connections

- Historic woodland and Ag use shifting to Recreational touring
- ATV use is now echoing the longstanding tradition of snowmobile trails.
- Potentially in any highway r/w, except freeways.
- Direct community connections-Touring, shopping, etc..



Transportation Professionals and ATV's

- Why should we care?

- Safety

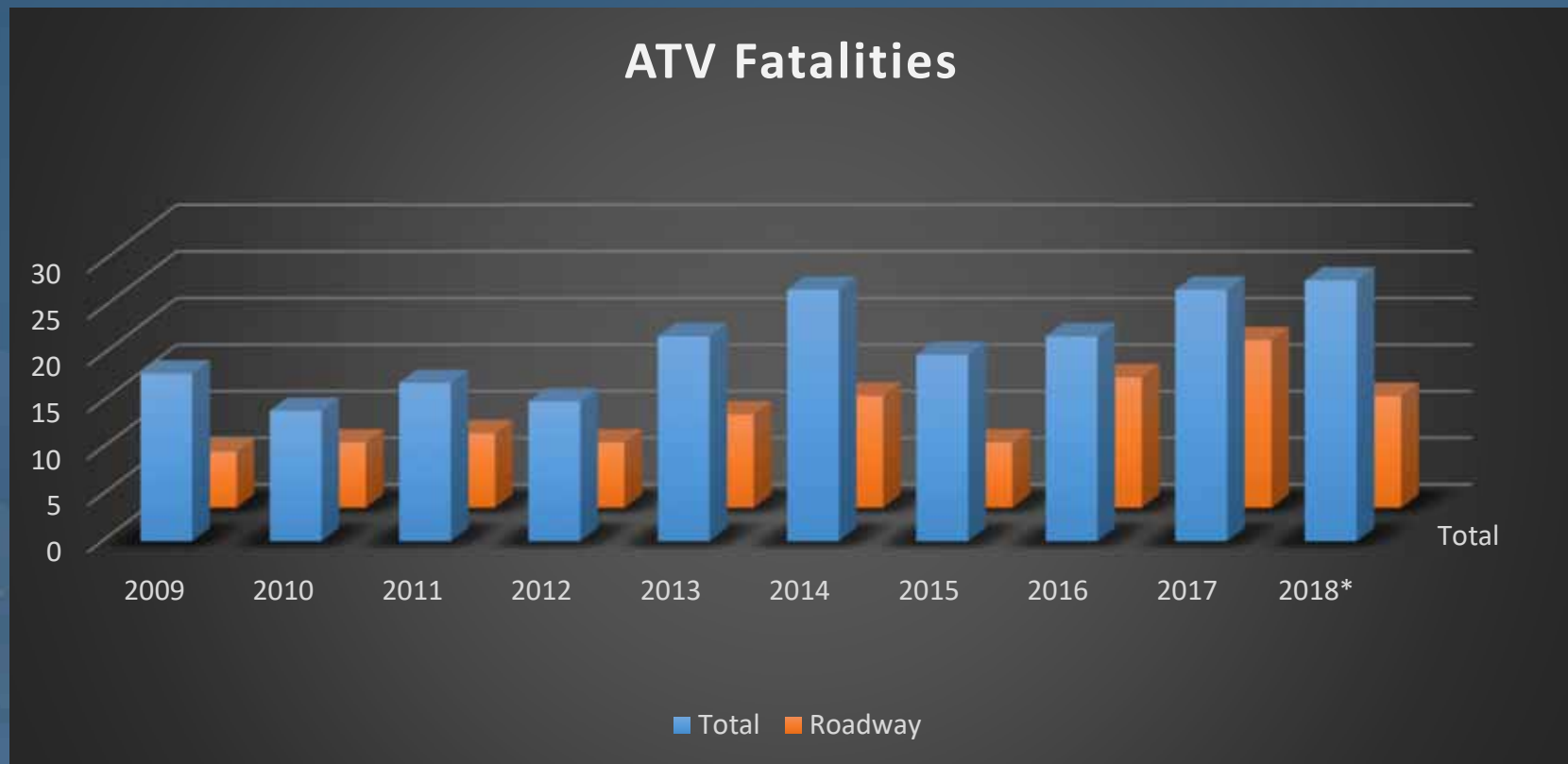


- Mobility/Roadway Operations

Safety

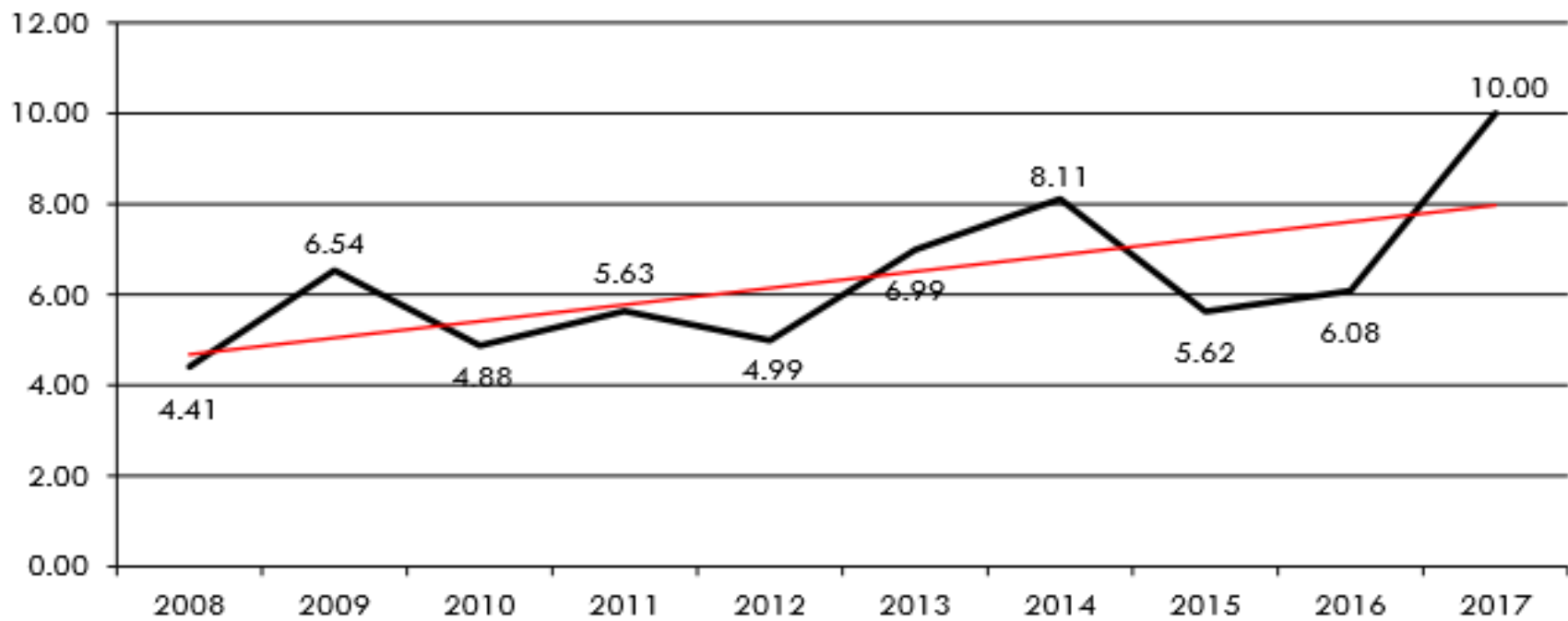
- Nationwide, over 14,000 fatalities in ATV crashes since federal safety officials began keeping track in the early 1980s.
 - ***Over half of the deaths occurred on public and private roads.***
 - ***3,200 of these were children under 15***
- In 2016, there were 22 fatal ATV crashes in **Wisconsin**.
 - 14 of those fatal crashes occurred ***on roadways***.
 - 8 of those were on ***marked routes***.
 - 11 of the 14 on roadway fatalities were alcohol related
 - 12 of the 14 fatalities were not wearing helmets
- 2017, there were 27 fatalities resulting from ATV crashes in **Wisconsin**
 - 18 of these on roadways of which 12 were ATV routes.
 - Ages ranging from 4 to 90 years

Safety



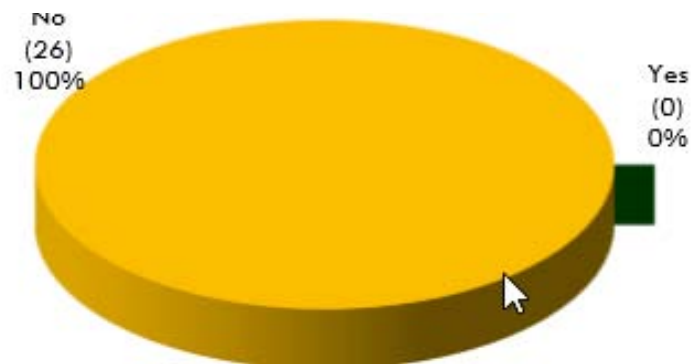
Safety

History of ATV fatalities per 100,000 Wisconsin ATV Registrations

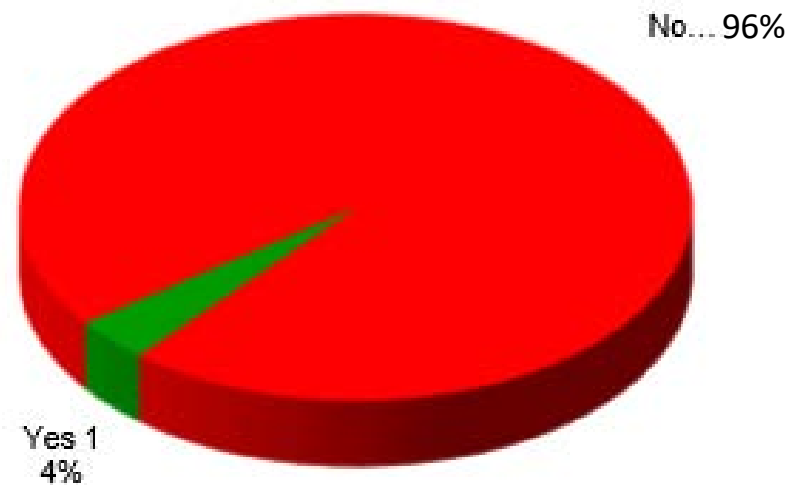


Safety

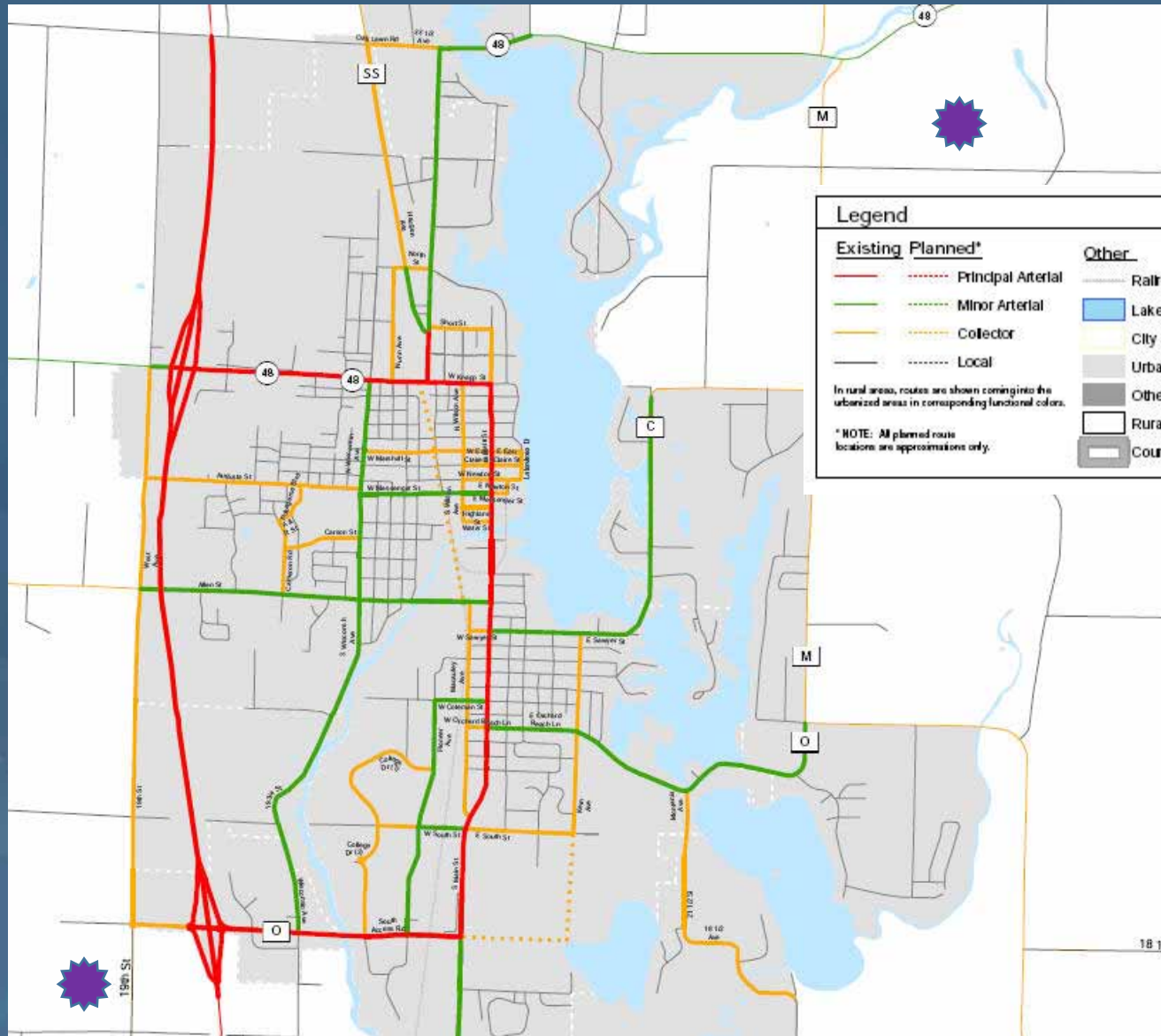
OPERATOR WAS WISCONSIN ATV/UTV SAFETY CERTIFIED



Presence of Helmet During Accident



System Considerations



Legend

Existing		Planned*		Other	
					Railroads
					Lakes, Rivers, Streams
					City and Village Boundary
					Urbanized Area
					Other surrounding urbanized areas
					Rural Area
					County Boundary

In rural areas, routes are shown coming into the urbanized areas in corresponding functional colors.

* NOTE: All planned route locations are approximations only.

System Considerations

Functionality of roadway

- Arterial or Collector, Access Controls, Signals or RABs, OSOW Route?



System Considerations

Road Type average crash rates

6-lane Freeways with AADT \leq 90,300 vpd	64.93
6-lane Freeways with AADT > 90,300 vpd	112.70
4-lane Freeways	49.35
65 mph Expressways*	49.28
55 mph Expressways*	77.70
Multilane Divided Highways Posted at 45 mph or higher	200.94
Multilane Divided Highways Posted at 40 mph or lower	418.44
Multilane Undivided and One-Way Highways	451.53
Rural 2-lane Highways with AADT \leq 2,000	105.77
Rural 2-lane Highways with 2,000 < AADT < 7,000	80.94
Rural 2-lane Highways with AADT \geq 7,000	98.93
2-Lane Highways Posted at 40 mph or lower	302.37

WISDOT & ATV Routes

ATV Trails



DEFINITIONS OF THE DAY

Highway = The right-of-way within and upon which a public roadway and its appurtenances are located.

Roadway = The portion of highway used for vehicular travel, i.e. 'shoulder to shoulder' or 'back of curb to back of curb'.



DEFINITIONS OF THE DAY

Trail = Permitted and marked within the highway right-of-way, but built **off** the roadway.

Route = Permitted and marked to operate within the highway right-of-way **on** the roadway.



ATV Crossing a State Trunk Highway

- ❑ Legal...as a rule, if done in the most direct manner practicable, and at a place where no obstruction prevents a safe and quick crossing. Law enforcement will be the judge if you meet these criteria if they see you crossing.

The Crossing must be at a legal connection, such as a permitted driveway, public road that is a route, or permitted Trail.



ATV and UTV Operation on State Highways



ATV and UTV Operation on State Highways

Freeway-SHALL NOT

Expressway-SHOULD NOT

Other State Highways, Connecting Highways-We shall see

•ATV and UTV Operation on State Highways (and other roadways)

It is legal when:

- The 'public' roadway is **not** being maintained for public traffic. Regardless of condition, if receiving General Transportation Aids (GTA), the road is being 'maintained'.
- ATV is being used as an 'implement of husbandry' as defined in WI statutes.
- Operator holds a Class A or B permit under Wis. Stat. 29.193(2) and is traveling for hunting.
- The roadway is designated as an ATV **route or trail**.



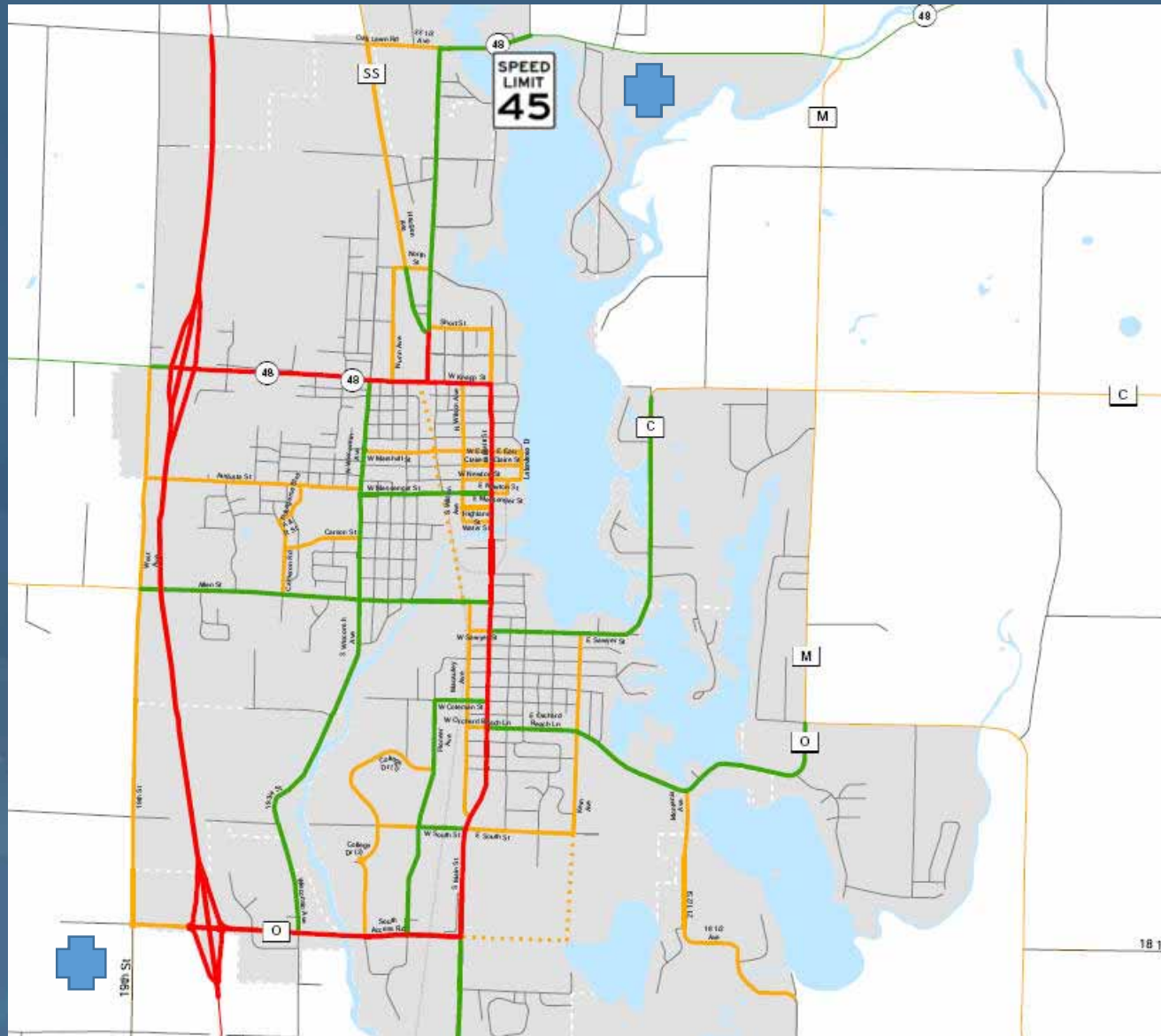
ATV and UTV Operation on State Highways

Condition 1 - ATV route or trail designation on state highways

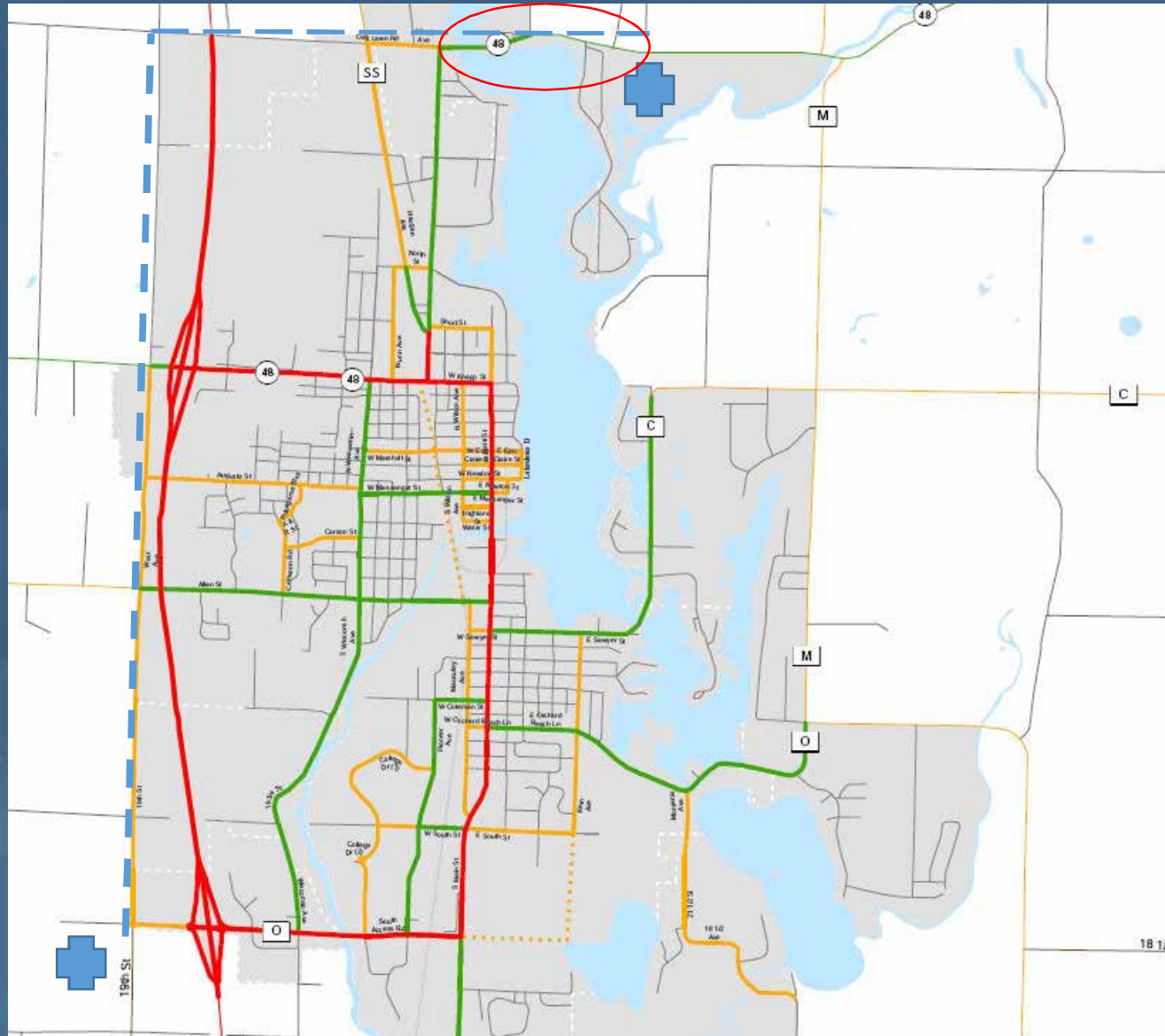
Wis. Stat. s. 23.33(8)(b)



ATV and UTV Operation on State Highways



ATV and UTV Operation on State Highways



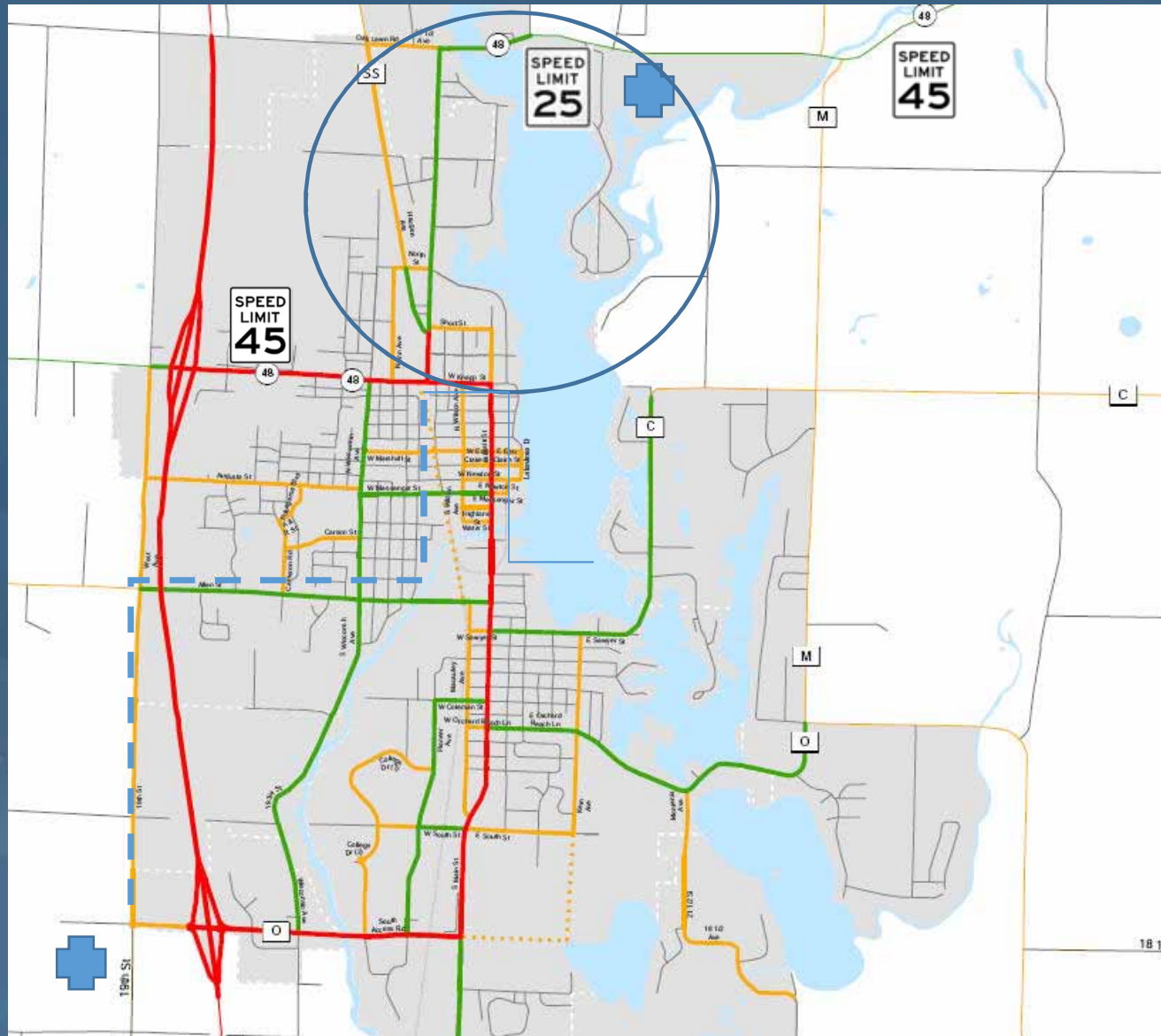
ATV and UTV Operation on State Highways

Condition 2 - ATV operation on state highways with speed limits of 35 mph or less within municipal boundaries

Wis. Stat. s. 23.33(11)(am)4



ATV and UTV Operation on State Highways



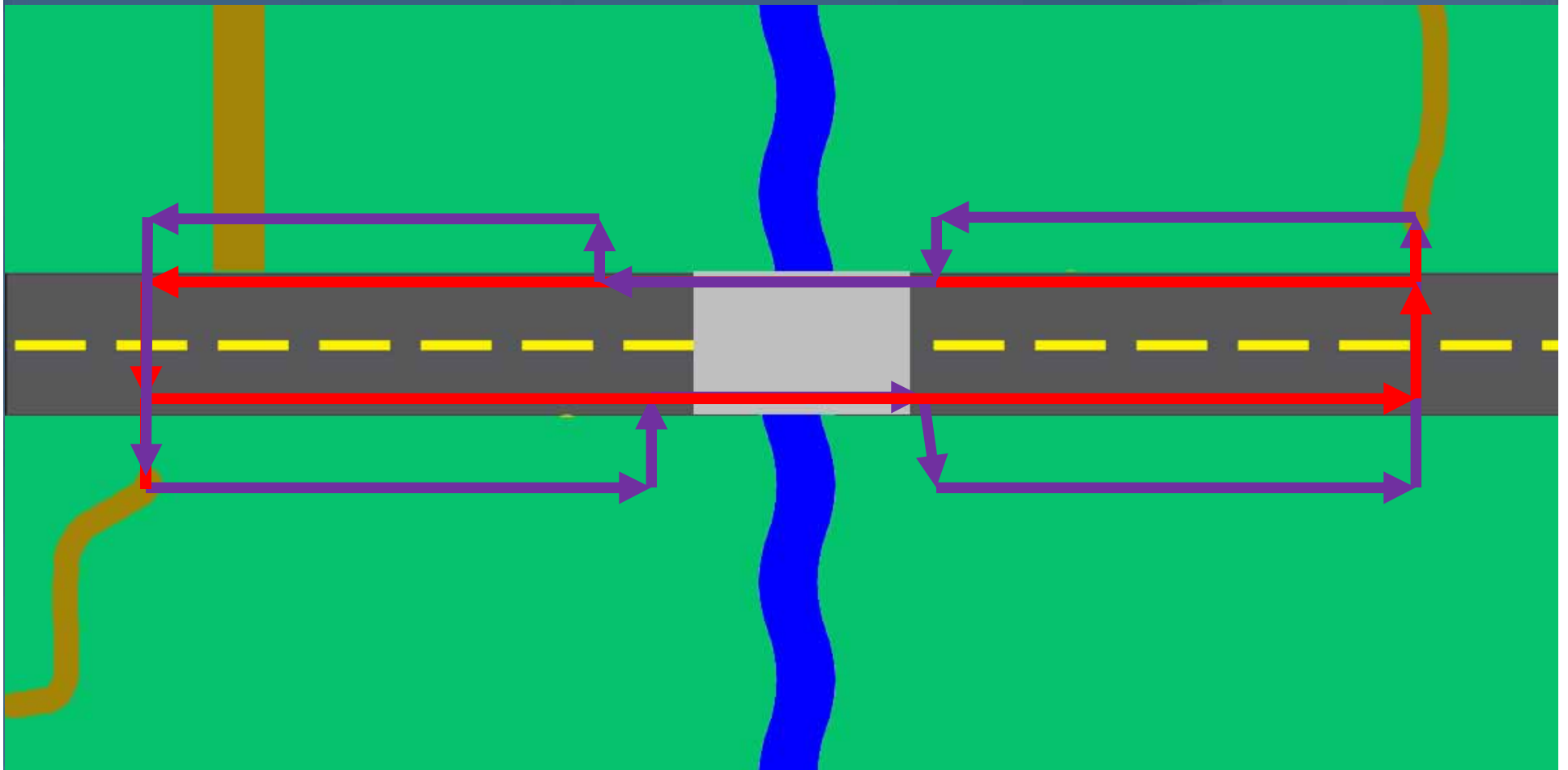
ATV and UTV Operation on State Highways

Condition 3- ATV route designation over state highway bridges 1,000' in length or less

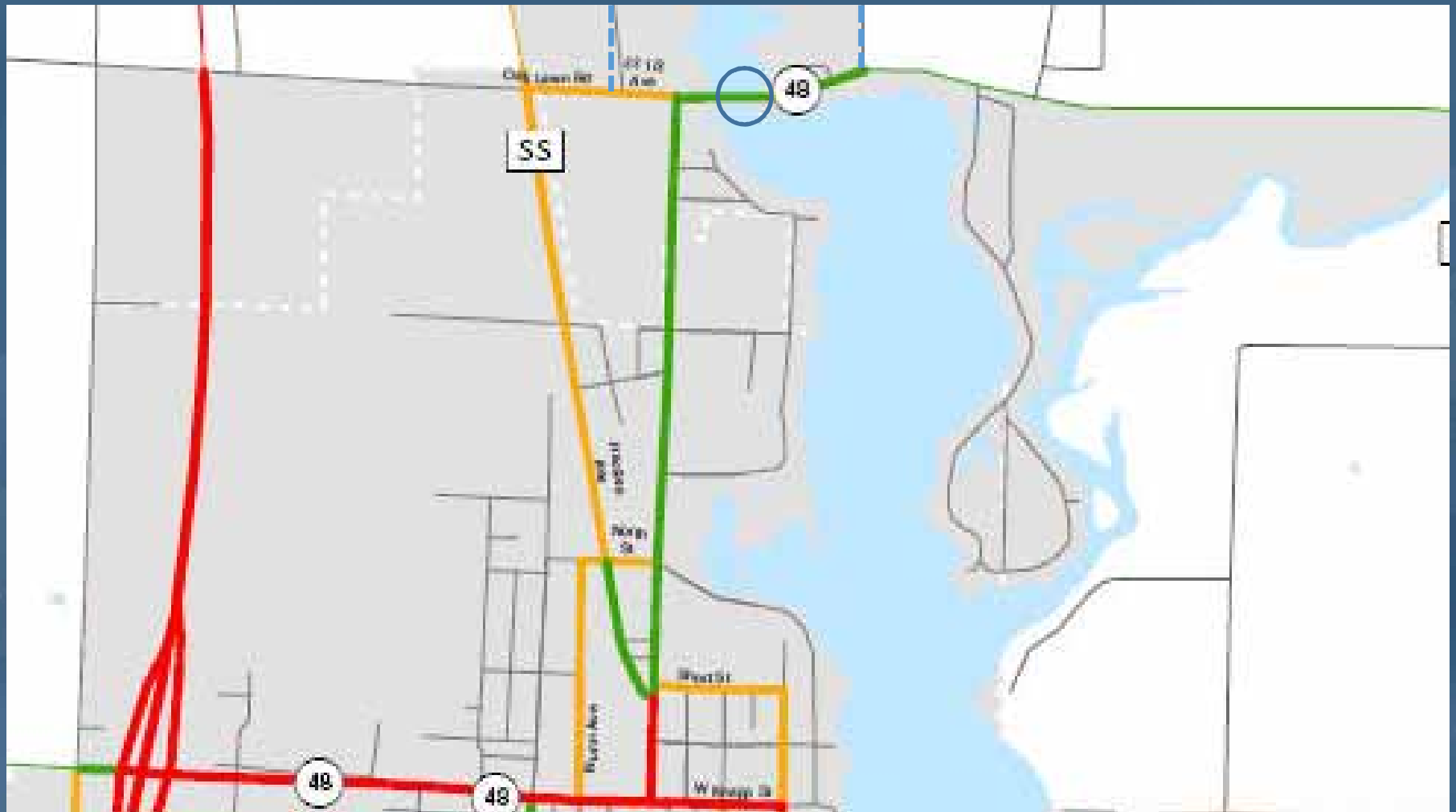
Wis. Stat. s. . 23.33(4)(d)3.b. and 11(am)3



ATV and UTV Operation on State Highways



ATV and UTV Operation on State Highways



ATV and UTV Operation on State Highways

Condition 1 - ATV route designation on state highways

Wis. Stat. s. 23.33(8)(b)

Condition 2 - ATV operation on state highways with speed limits of 35 mph or less within municipal boundaries

Wis. Stat. s. 23.33(11)(am)4

Condition 3- ATV route designation over state highway bridges 1,000' in length or less

Wis. Stat. s. . 23.33(4)(d)3.b. and 11(am)3

Summary

Condition	Muni or County Ord	Both Muni and County Ord	WisDOT approval
Condition 1 - ATV route designation on state highways	Yes		Yes
Condition 2 - ATV operation on state highways with SL 35 or less, in Muni	Yes		
Condition 3- ATV route designation over state highway bridges 1,000' in length or less		Yes	

Questions?

Jeff Emerson

NW Region Planning and Access Supervisor

jeffrey.emerson@dot.wi.gov

