

2014 Wisconsin Tribal Transportation Conference

October 21, 2014 (Session A) – Green Bay, WI

Mapping the Future: Using Community Maps as a Tool for MAP-21 Safety Funding and Other Safety Initiatives

Steven T. Parker, Ph.D.

UW-Madison TOPS Lab

sparker@engr.wisc.edu

Thomas Fronk, P.E.

Bureau of Indian Affairs

thomas.fronk@bia.gov



Wisconsin Traffic Operations and Safety Laboratory

Department of Civil and Environmental Engineering
University of Wisconsin-Madison



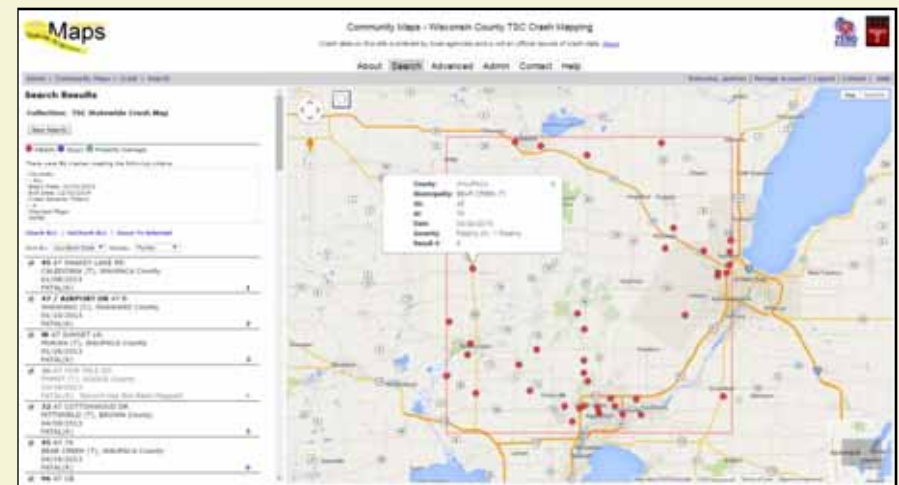
Presentation Outline

- Community Maps Overview
- Crash Mapping along Tribal Roads
- Benefits of Community Maps
- System Access Information
- Live Demonstration
- BIA Perspective and Opportunities




Community Maps Overview

- Online System for Crash Mapping
- Basic and Advanced Search Features
- Mapping Interface for Local Agencies
- Public / Password Protected Areas
- Built Using Google Maps API
- Used by County TSCs
- Fatal Crashes from 2001
- "A" Injury Crashes from 2012
- WisDOT BOTS Sponsored



Community Maps – Public Search



Community Maps - Wisconsin County TSC Crash Mapping

Crash data on this site is entered by local agencies and is not an official source of crash data. [\[More\]](#)

[About](#) [Search](#) [Advanced](#) [Admin](#) [Contact](#) [Help](#)

Home > Community Maps > Crash > Search

Welcome, sparker | [Manage Account](#) | [Logout](#) | [Contact](#) | [Help](#)

Collection ?

TSC Statewide Crash Map


Counties ?


ALL
ADAMS
ASHLAND
BARRON
BAYFIELD

Center ?

Date Range ?

Format: MM/DD/YYYY

Begin Date: 

End Date: 

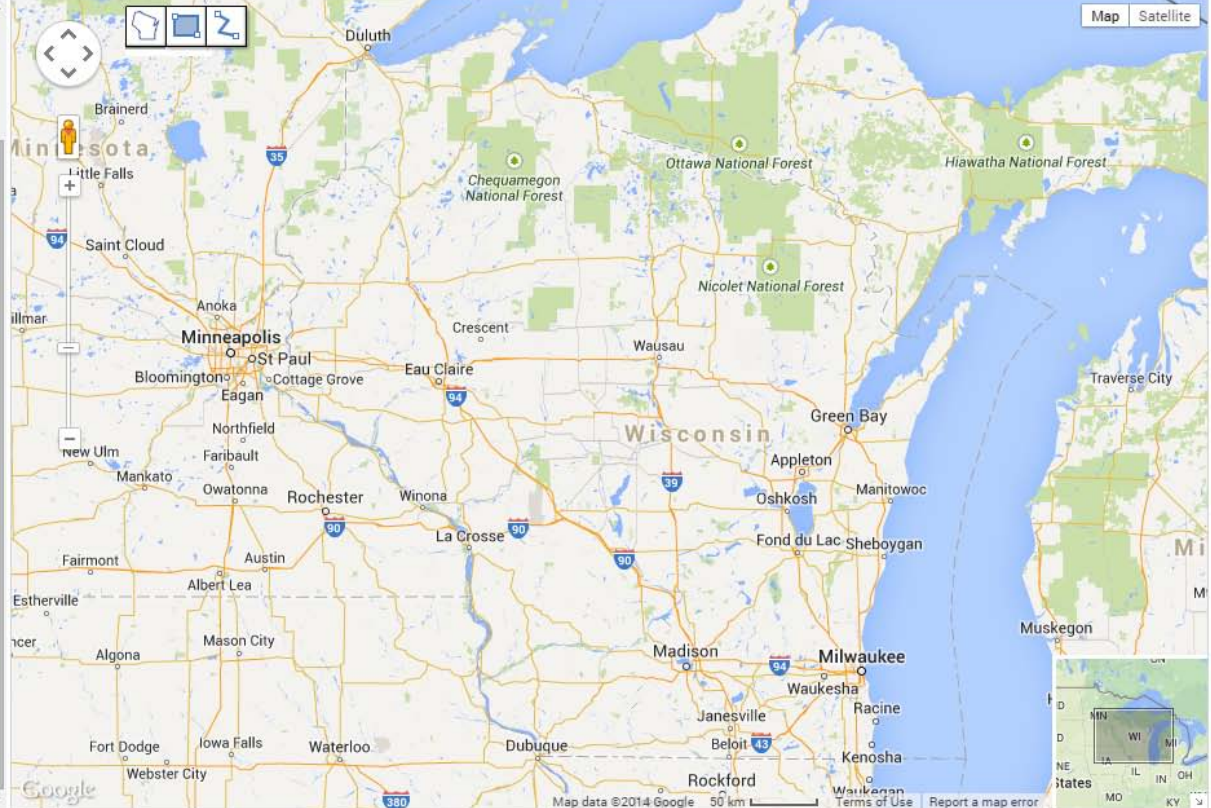
Crash Severity ?

Clear Selected

(K) FATALITY
 (A) INJURY - INCAPACITATING
 (B) INJURY - NON-INCAPACITATING
 (C) INJURY - POSSIBLE
 (O) PROPERTY DAMAGE / OTHER

Crash Flags ?

Alcohol Flag Bike Flag
 Cycle Flag Pedestrian Flag
 Speed Flag Construction Zone



Map data ©2014 Google 50 km [Terms of Use](#) [Report a map error](#)



Community Maps – Advanced Search



Community Maps - Wisconsin County TSC Crash Mapping

Crash data on this site is entered by local agencies and is not an official source of crash data. [More](#)



- About
- Search
- Advanced
- Admin
- Contact
- Help

Home > Community Maps > Crash > Advanced

Welcome, sparker | [Manage Account](#) | [Logout](#) | [Contact](#) | [Help](#)

Search Results

Collection: **TSC Statewide Crash Map**

-

Fatality
 Injury
 Property Damage

There were **329** crashes meeting the following criteria.

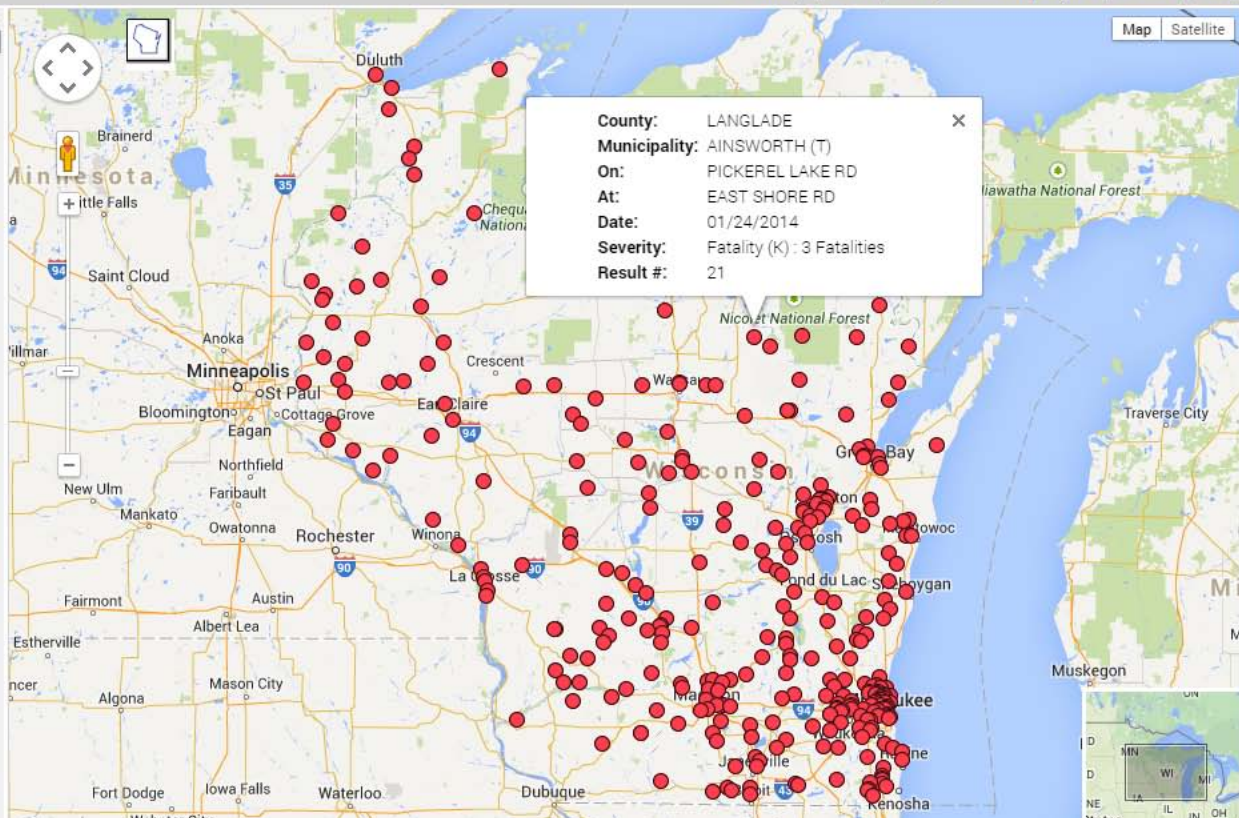
Counties:
 - ALL
 Begin Date: 01/01/2014
 End Date: 12/31/2014
 Crash Severity Filters:
 - K
 Deer Flag: INCLUDE DEER CRASHES
 Checked Flags:
 Logical operator to combine crash flags is: OR
 NONE

Sort By: Display:


- DXM4V61
CTH A AT W RICHMOND WAY
 RICHMOND (T), ST. CROIX County
 01/01/2014
 (K) FATALITY 1

- A399499
STH 73 AT COUNTY ROAD K
 WASHBURN (T), CLARK County
 01/07/2014
 (K) FATALITY 2

- HJ00RR1
CTH Y AT WHITEFISH LAKE RD
 GORDON (T), DOUGLAS County
 01/08/2014
 (K) FATALITY 3



Community Maps – Edit Interface



COMMUNITY
Maps
POLICE LINE - DO NOT CROSS

Community Maps - Wisconsin County TSC Crash Mapping

Crash data on this site is entered by local agencies and is not an official source of crash data. [\[More\]](#)

[About](#) [Search](#) [Advanced](#) [Admin](#) [Contact](#) [Help](#)

Home > Community Maps > Crash > Add or Edit a Record

Welcome, sparker | [Manage Account](#) | [Logout](#) | [Contact](#) | [Help](#)

CRASH RECORD EDIT INTERFACE

Current Folder: (05) BROWN

[Save](#) | [Return](#) | [Save and Return](#) | [Save and New](#) | [Reset](#) [WisDOT County Maps](#)

Publish **Lock (Locking and Saving a Record will disable Edit mode)**

*Document Number (MV4000) **9NZ6BRN** [Edit Doc Nbr](#)

*Accident Date: [Format: MM/DD/YYYY](#)

Accident Hour: [▼](#)

Agency:

County: [▼](#)

Municipality: [▼](#)

ON: [Direction](#) [▼](#)

AT:

Distance to Intersection: [Format: XX.XX \(in miles\)](#) [Direction](#) [W](#) [▼](#)

[Binoculars Help](#) | [Marker Help](#)

[Clear Markers](#) | [Reset Marker](#) | [Auto Locate](#)

Navigate **Plot Crash**

Hide Map Marker (Hide Marker Takes Affect in Search Interfaces Only)

Latitude: [Refresh Map \(Coordinates Help\)](#)

Longitude:

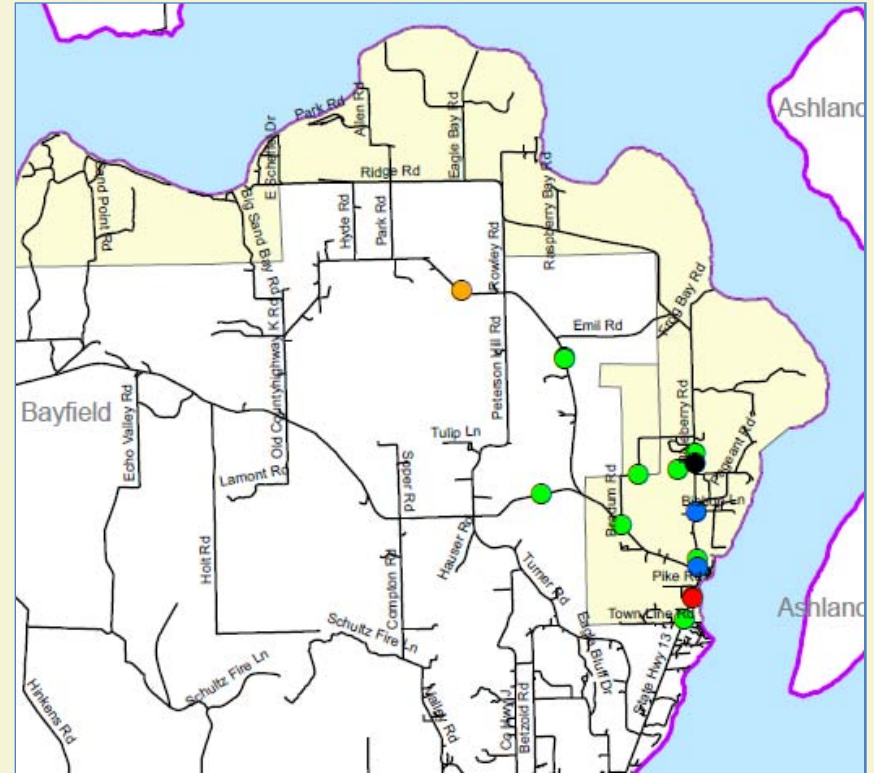
Injury Severity: [▼](#)

Total Fatalities:

Total Injuries:



Community Maps – Tribal Roads



Bayfield County (Red Cliff), 2007-2011.

Left: Community Maps. Right: Lac Courte Oreilles Ojibwa Community College Map



Benefits of Community Maps

- Centralized, online system for crash mapping
- Incorporates Google Maps coverage of tribal roadway network
- Supports local agency ownership of crash data
- Supports historical evidence of crashes for grant applications
- Enhances traffic safety data sharing and awareness
- Part of the TOPS Lab WisTransPortal system



WisTransPortal Account Request Form

WisTransPortal Data Hub
User Account Request Form

For assistance, see the [account services](#) page or email transportal@topslab.wisc.edu.

Step 1: To request a WisTransPortal login account, complete the information below and press **Next**. Required fields are marked with asterisks. Press **Cancel** to return to the account services page without completing your request.

Title:	<input type="text"/>
*First Name:	<input type="text"/>
*Last Name:	<input type="text"/>
Desired User ID:	<input type="text"/> Ex: bbadger. See note below.
*Email Address:	<input type="text"/>
*Confirm Email:	<input type="text"/>
*Job Title:	<input type="text"/>
*Organization:	<input type="text"/>
*Phone:	<input type="text"/> Ex: 555-555-5555
*Resources:	<input type="text"/>
Comments:	<input type="text"/> Indicate which parts of the WisTransPortal you are requesting to access.

Note: WisTransPortal User IDs are case sensitive. For example, "BBadger" and "bbadger" are treated as two different Users IDs.

<http://transportal.cee.wisc.edu/services/accounts/>



Contact Information and Live Demo

community-maps@topslab.wisc.edu



The screenshot shows the website for the Wisconsin Traffic Operations and Safety Laboratory (TOPS). The main heading is "The WisTransPortal System". Below this, a description states: "The WisTransPortal system serves the computing and data management needs of the Wisconsin Traffic Operations and Safety (TOPS) Laboratory. The project scope includes support for ITS data archiving, real-time traffic information services, transportation operations applications, and transportation research. [Learn more.](#)"

The navigation bar includes "Home > Applications > Community Maps" and "Welcome, sparker | Manage Account | Logout | Contact | Help".

The main content area is titled "Community Maps - Wisconsin County TSC Crash Mapping". It features a sidebar with links: Home, Services, Products, Applications, Documents, Traffic Video, and Resources. The main text includes:

- Enter Community Maps**
- Community Maps provides Wisconsin's local law enforcement and county Traffic Safety Commissions with an online interface for mapping crash data. Fatal crash locations are mapped from 2001 to the present. Severe injury crashes are mapped from 2012. Crashes are mapped through a combination of manual and automated processing. Community Maps uses the Google Maps API, which provides a familiar, high quality map interface.
- Community Maps is hosted at the [University of Wisconsin-Madison](#) by the [Wisconsin Traffic Operations and Safety \(TOPS\) Laboratory](#) in collaboration with the [Wisconsin Department of Transportation \(WisDOT\)](#) Bureau of Transportation Safety (BOTS).
- For Community Maps technical support, please email community-maps@topslab.wisc.edu.
- WisDOT BOTS contact information:
 - Robert Bott
Regional Program Manager
Division of State Patrol, WisDOT
Email: Robert.Bott@dot.wi.gov
- TOPS Lab contact information:
 - Steven T. Parker, Ph.D.
Traffic Operations and Safety (TOPS) Laboratory
UW-Madison Department of Civil and Environmental Engineering
E-mail: sparker@ceor.wisc.edu

<http://transportal.cee.wisc.edu/partners/community-maps/>

